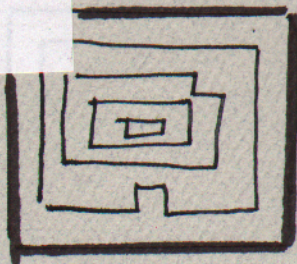


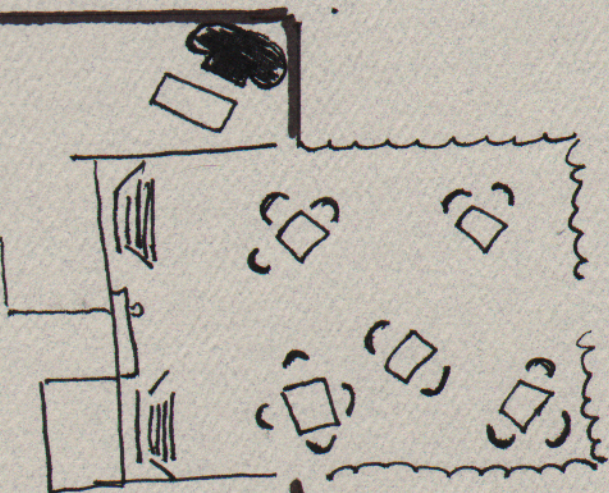
# Meaningful Places

A three-part pattern

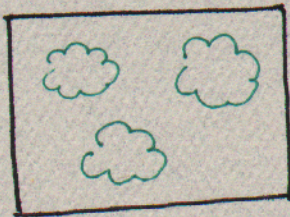
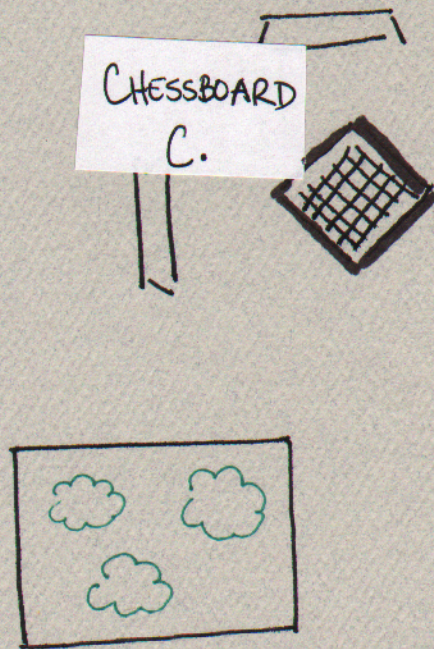
THE PYRAMID  
B.



LAKE ANNE  
COFFEE HOUSE  
A.



CHESSBOARD  
C.



Three domains,

rich and independently dynamic, join together to create a cohesive system of patterns at Lake Anne. Children play on and around *The Pyramid* as their parents stay close-by, sitting on benches, observing or playing a game of *chess*, talking to other parents. If in need of refreshment, they walk over to the *coffee house* where others may be sharing a meal and catching up on conversation. Inside the coffee house, one can find some warmth in the winter, or cool in the summer and a quieter place perhaps to read or study on one's own. This place of community dwelling involves the smaller, micro world of each place joining in a larger, macro pattern of the unique possibilities offered by Lake Anne. There is meaning, life in the connection between each place and its connection to the places around it.